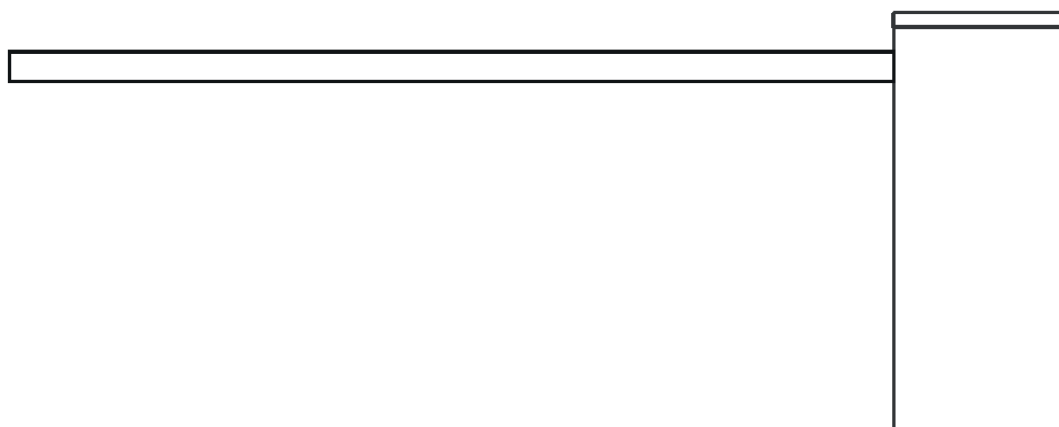




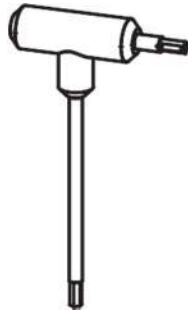
# MOVEO

## APE-150/6010

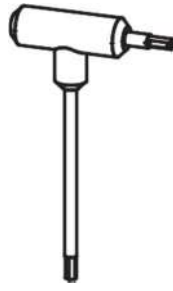


is a registered trademark owned by  
**AB Tecno srl**

Via Cicogna, 95 - 40068  
S. Lazzaro di Savena (BO)  
[info@abtecno.com](mailto:info@abtecno.com)  
[www.abexo.tech](http://www.abexo.tech)



n.6



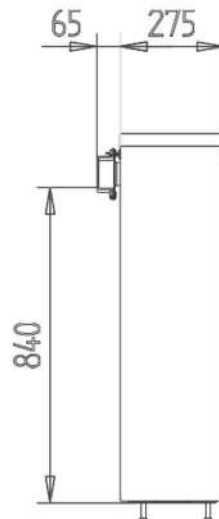
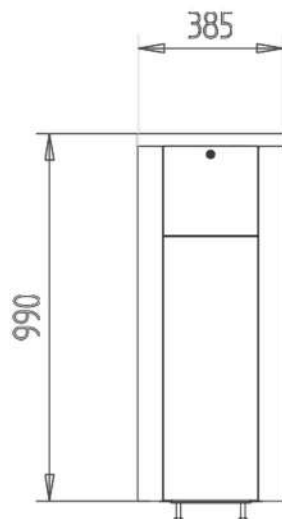
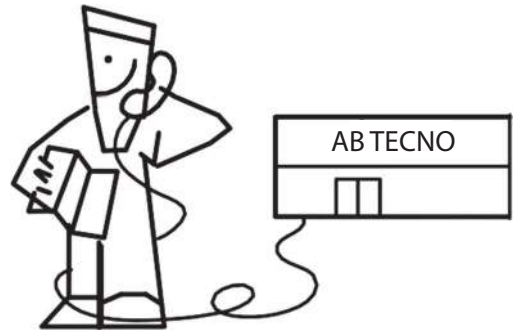
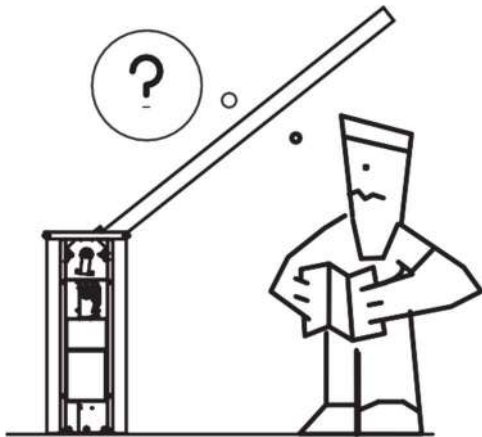
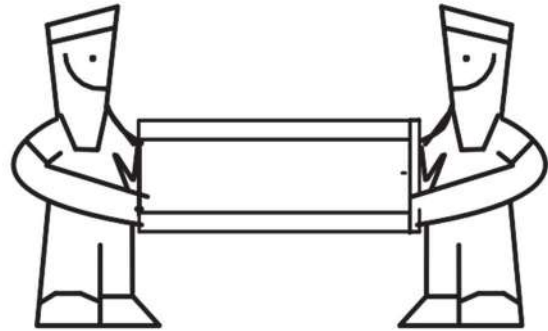
n.5

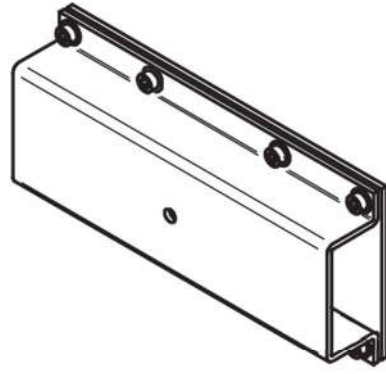
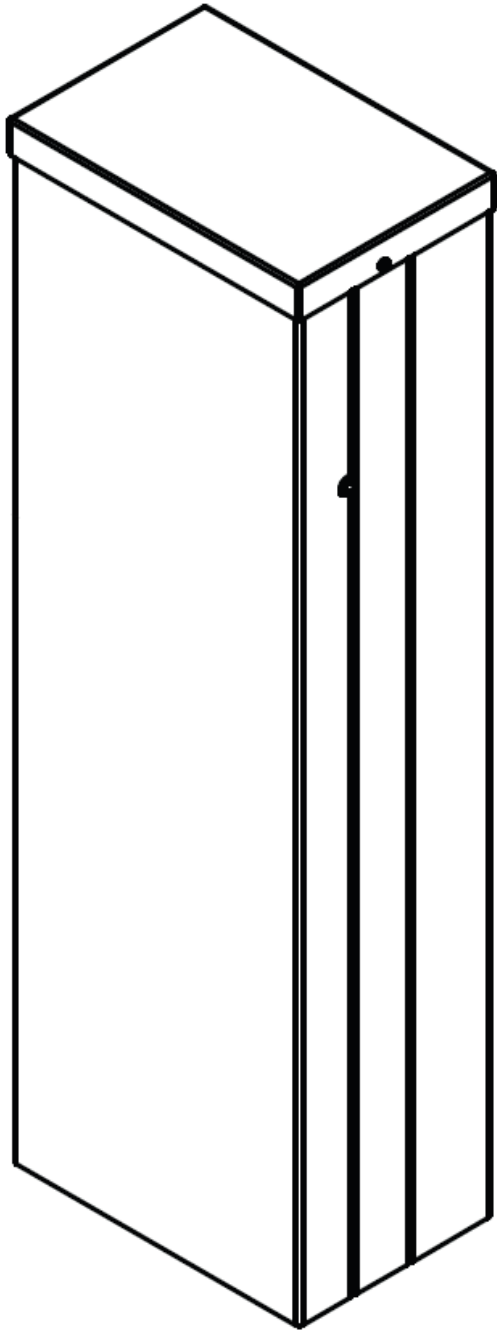


n.13

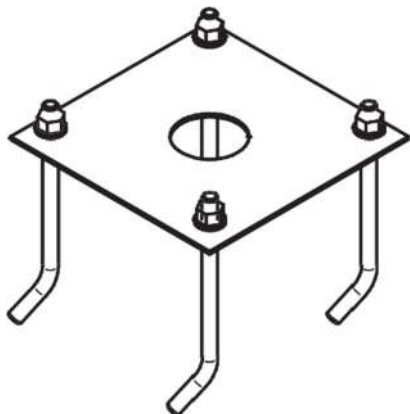
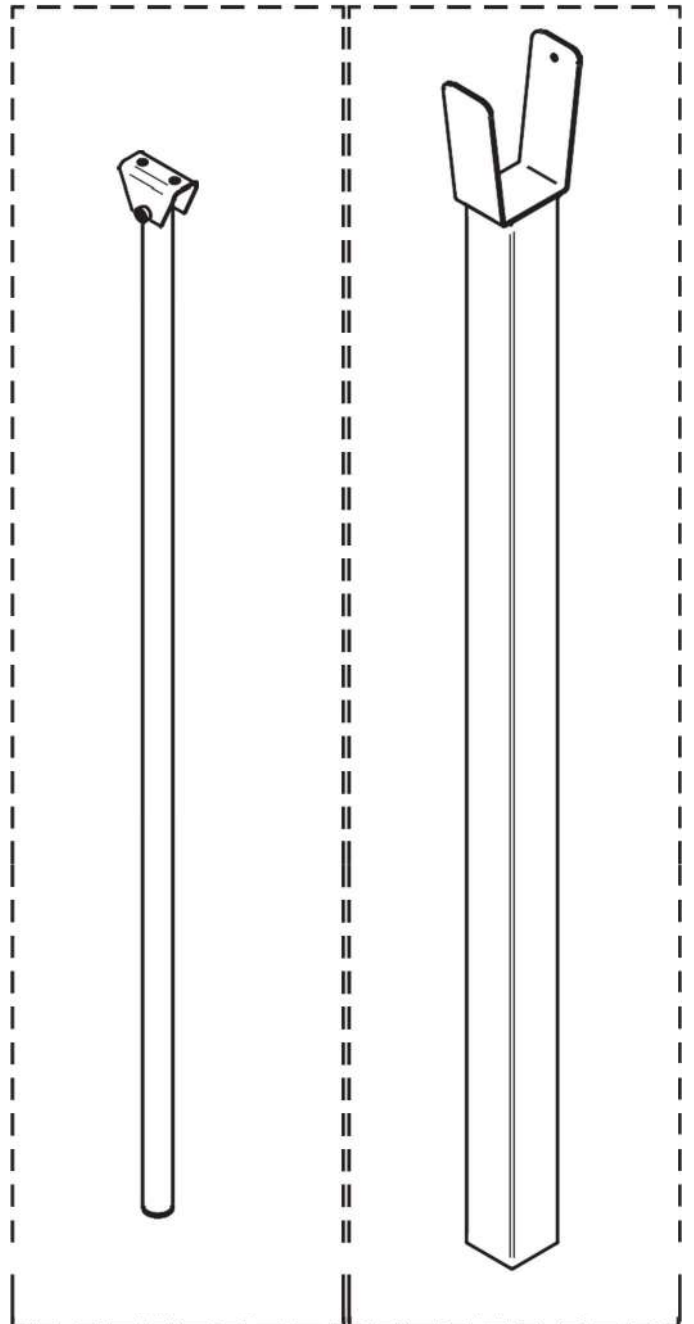


n.10



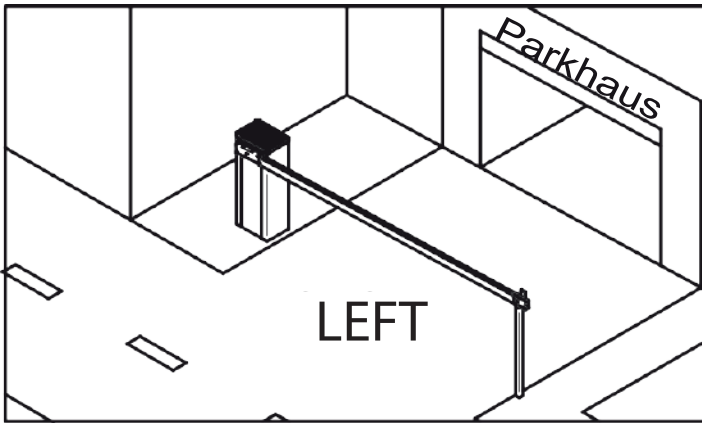


OPTIONALS

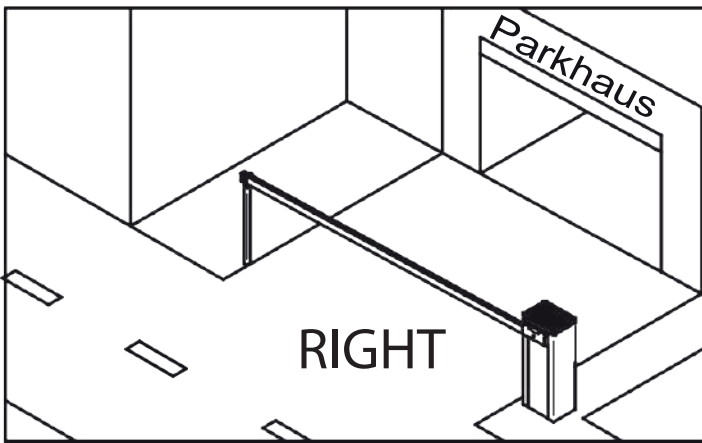


## SYSTEM PREDISPOSITION

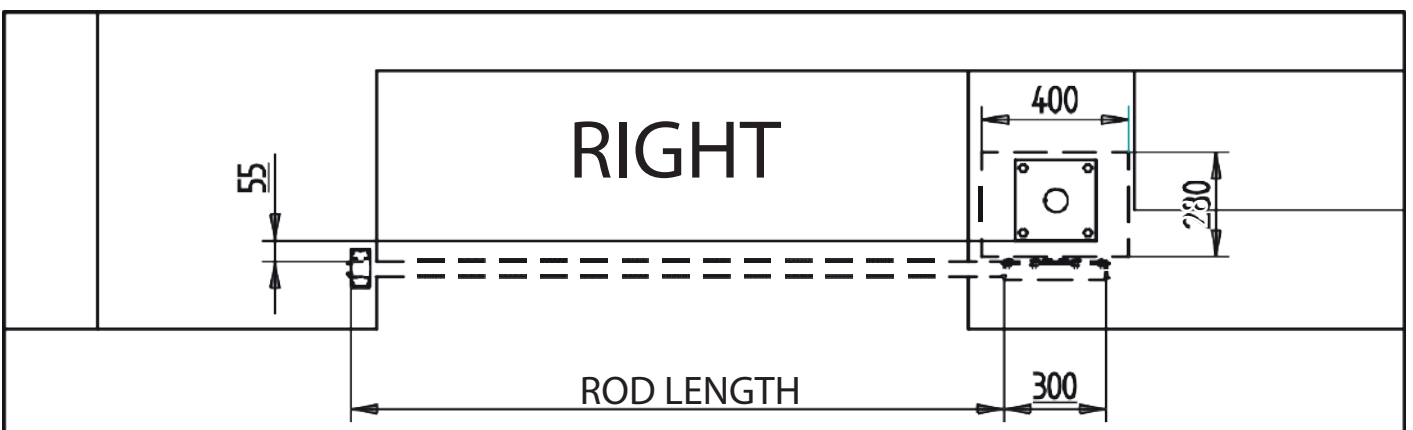
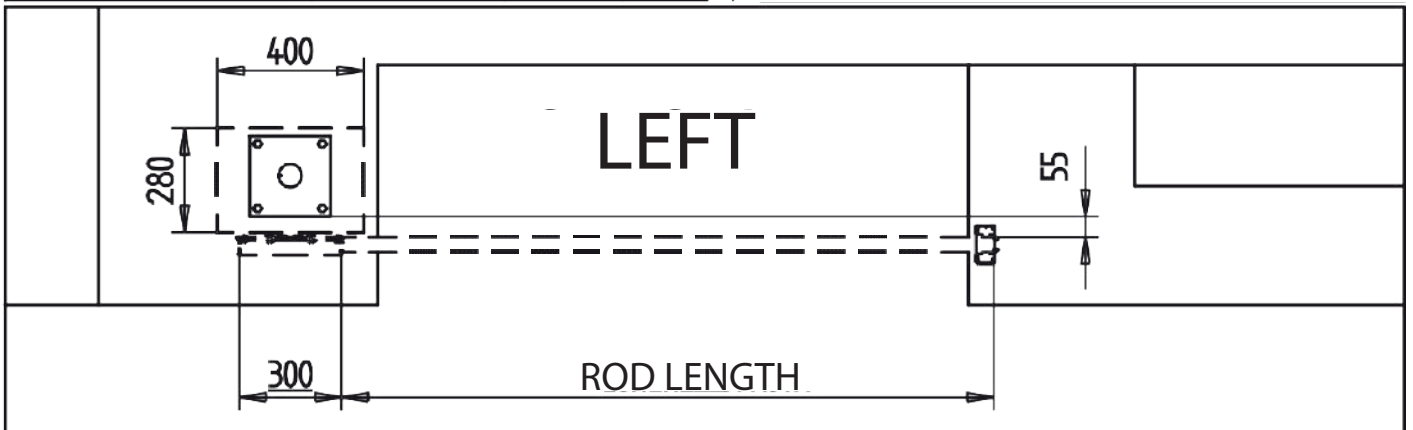
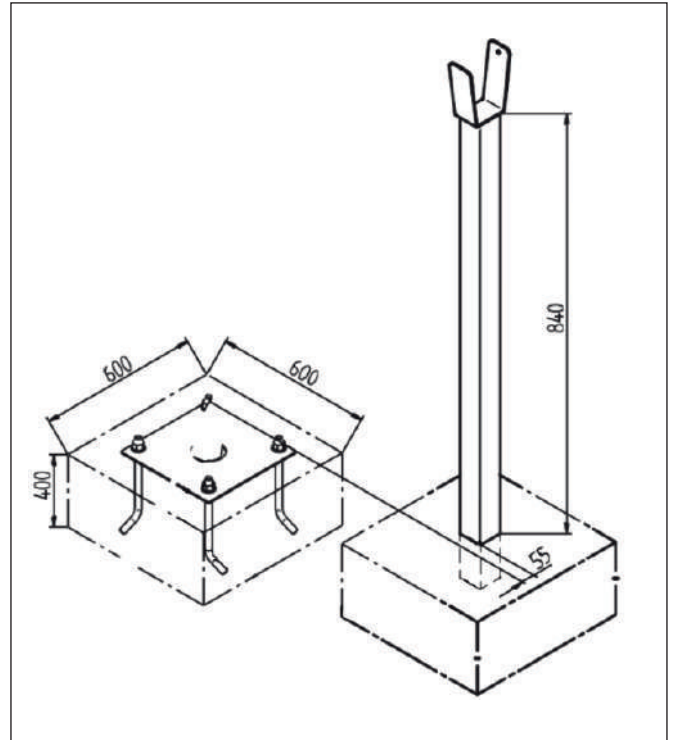
We indicate as 'LEFT' a barrier that, when looking at the automation from outside the driveway, is installed to the left of the driveway.



We indicate as 'RIGHT' a barrier that, when looking at the automation from outside the driveway, is installed to the right of the driveway.



Once the orientation of the barrier has been chosen, it is necessary to prepare for the installation of the system by grounding the foundation base and rod fork support, if any. Refer to the figures below for the masonry.



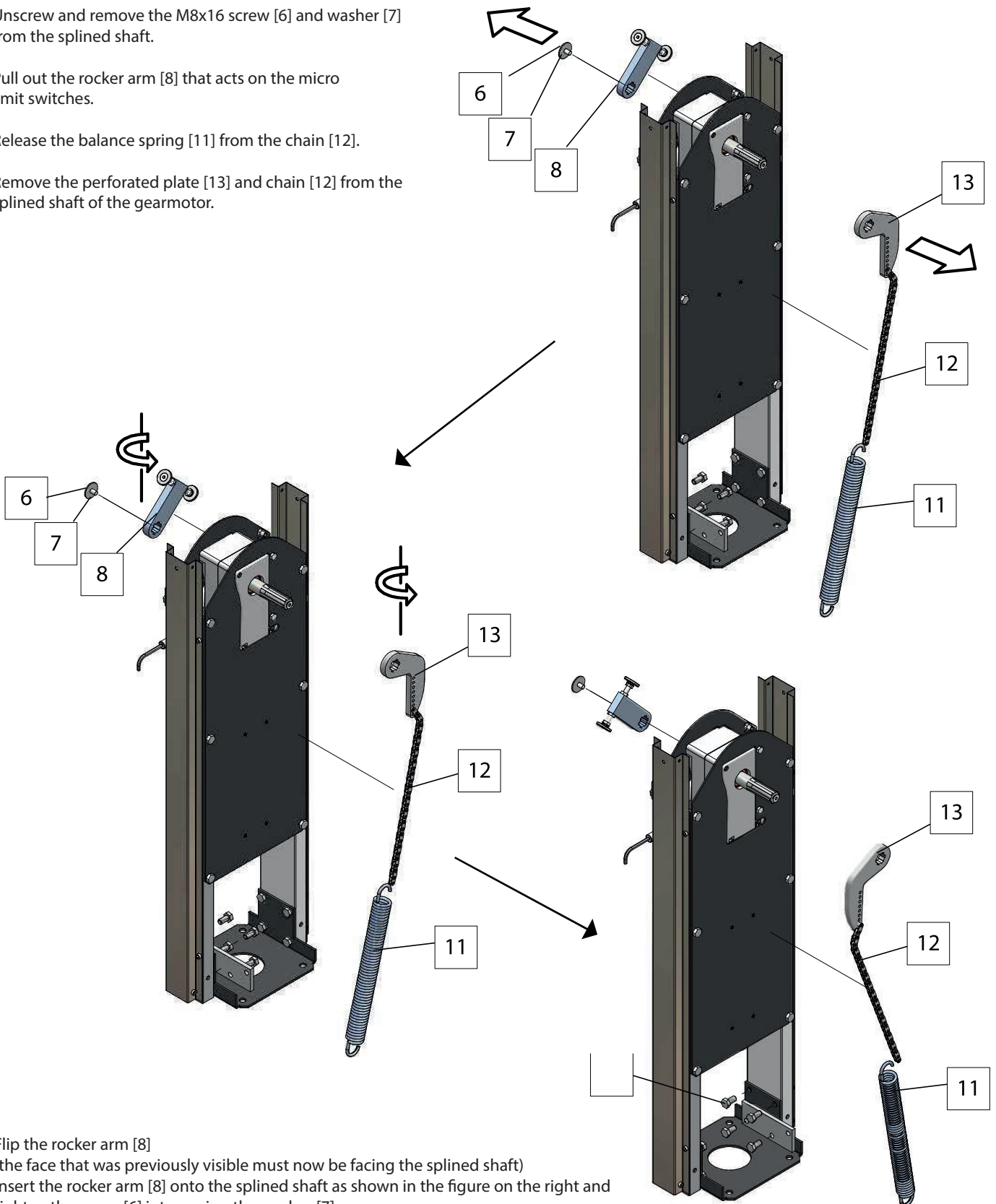
## CONVERSION FROM "RIGHT" BARRIER TO "LEFT" BARRIER

Unscrew and remove the M8x16 screw [6] and washer [7] from the splined shaft.

Pull out the rocker arm [8] that acts on the micro limit switches.

Release the balance spring [11] from the chain [12].

Remove the perforated plate [13] and chain [12] from the splined shaft of the gearmotor.

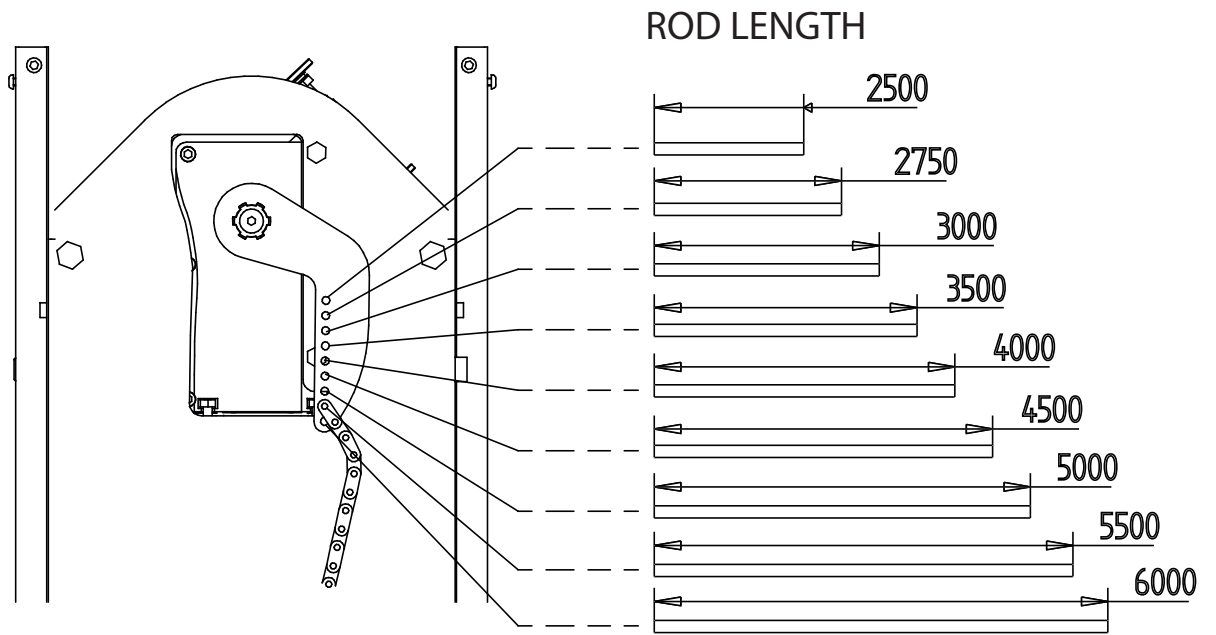


Flip the rocker arm [8]  
(the face that was previously visible must now be facing the splined shaft)  
Insert the rocker arm [8] onto the splined shaft as shown in the figure on the right and tighten the screw [6] interposing the washer [7].

Flip over the perforated plate [13] with the chain attached (the face that was previously visible should now face the splined shaft).  
Insert the perforated plate [13] onto the splined shaft as shown in the figure to the right.

Hook the balance spring [11] onto the plate [10] and chain [12].

# ADJUSTMENT OF THE CHAIN ATTACHMENT POINT



Verify that the chain is connected to the lever in the correct position according to the length of the rod that is to be installed on the barrier.





is a registered trademark owned by  
**AB Tecno srl**

*Via Cicogna, 95 - 40068  
S. Lazzaro di Savena (BO)  
info@abtecno.com  
www.abexo.tech*